

# QTE Manufacturing Solutions

## Recommended Procedures for Updating to Mastercam X3

### NOTES:

- This procedure leaves your current Mastercam version intact and fully functional. It will install a new X<sup>3</sup> installation in a new directory.
- You must have current maintenance codes.
- It is highly recommended to do a backup of all or your Mastercam files including the current installed directory, before starting this installation procedure.

### INSTALLATION PROCEDURES:

#### A. MAKE A TEMPORARY FOLDER TO LOCATE FILES TO BE UPDATED

1. Make a new folder on your computer for files we will copy and update. Recommended: C:\MCTEMP
2. Copy the following directories from your previous Mastercam installation to this C:\MCTEMP directory:

Copy the C:\McamX2\cnc\_machines folder to C:\MCTEMP\cnc\_machines

Copy the C:\McamX2\mill to C:\MCTEMP\mill

Copy the C:\McamX2\materials to C:\MCTEMP\materials

(Also copy any other machine types you have:

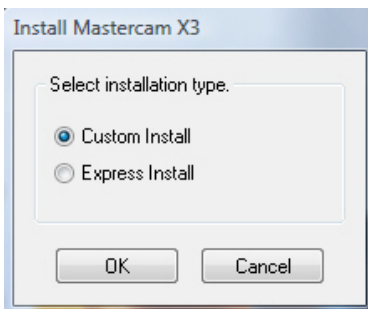
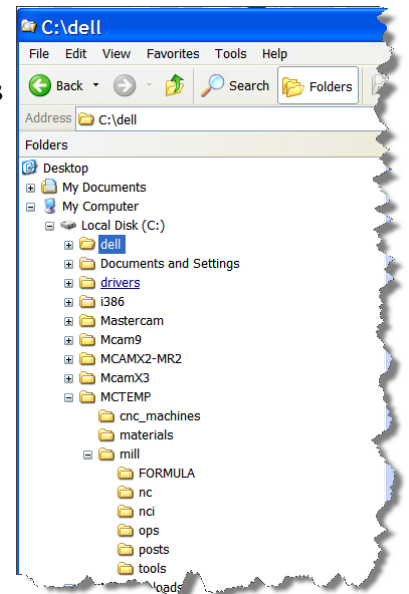
C:\McamX2\lathe to a new folder C:\MCTEMP\lathe

C:\McamX2\wire to a new folder C:\MCTEMP\wire

C:\McamX2\router to a new folder C:\MCTEMP\router)

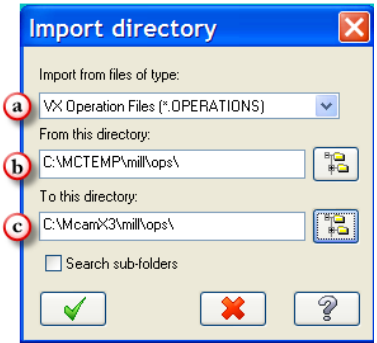
#### B. INSTALL MASTERCAM X3

1. Insert CD #1 and choose the following options:
  - a. Custom Install
  - b. Leave Previous Version
  - c. Do Not Migrate
  - d. Recommended install directory is: C:\MCAMX3



### C. UPDATE AND IMPORT SETTINGS FROM PREVIOUS VERSION

1. Start Mastercam X3
2. Select FILE – IMPORT DIRECTORY from menu
  - a. Select the file type (such as Operations)
  - b. Select the “From” directory (C:\MCTEMP\mill\ops)
  - c. Select the “To” directory (C:\MCAMX3\mill\ops)



#### **You will need to Import each of these file types:**

OPERATIONS (From C:\MCTEMP\mill\ops To C:\MCAMX3\mill\ops)

TOOLS (From C:\MCTEMP\mill\tools To C:\MCAMX3\mill\tools)

DEFAULTS (From C:\MCTEMP\mill\ops To C:\MCAMX3\mill\ops)

MATERIALS (From C:\MCTEMP\materials To C:\MCAMX3\materials)

MACHINE DEFINITION FILES (From C:\MCTEMP\cnc\_machines To

C:\MCAMX3\cnc\_machines) Note! Import all .mmd, .lmd, .rmd, & .wmd files.

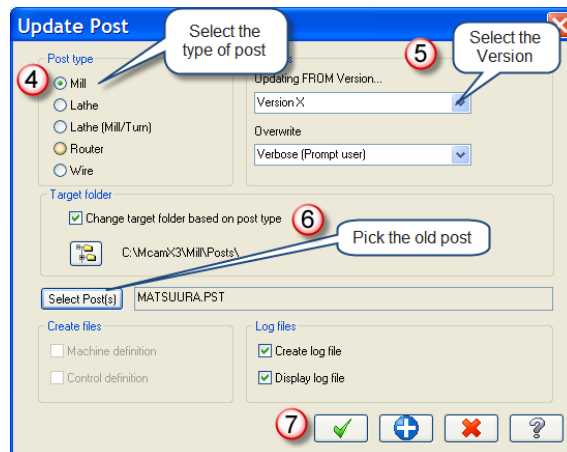
3. You will need to repeat this procedure to update the files for each machine type you have (mill, lathe, wire and router).
4. The .MCX files (Geometry files) will get updated as you open and save them in X3.

### D. COPY PREVIOUS VERSION CONTROL FILES

1. Control files do not require updating. They simply need to be copied to the correct location for X3 to find them.
2. Copy all files with a .control extension (example: haas.control)  
From C:\MCTEMP\cnc\_machines to C:\MCAMX3\cnc\_machines

### E. UPDATE AND COPY POST PROCESSORS FROM PREVIOUS VERSION

1. Start Mastercam X3
2. Select SETTINGS – RUN USER APPLICATION from the drop-down menus
3. Run the “UpdatePost.dll” application
4. Choose the type of post
5. Select version of post you are updating from
6. Select the post processor to update (example: C:\MCTEMP\mill\posts\matsura.pst)
7. Select OK
8. Repeat for each post processor from your previous installation you need to update (including lathe, wire and router posts if you have these applications)



### F. OPTIONAL: CUSTOMIZE AND PERSONALIZE YOUR X3 INSTALLATION

1. Configure any file paths names, colors, etc. by selecting SETTINGS – CONFIGURATION from the drop-down menu in Mastercam X3.